

# CERTIFICATE OF LOCATION OF GOVERNMENT CORNER

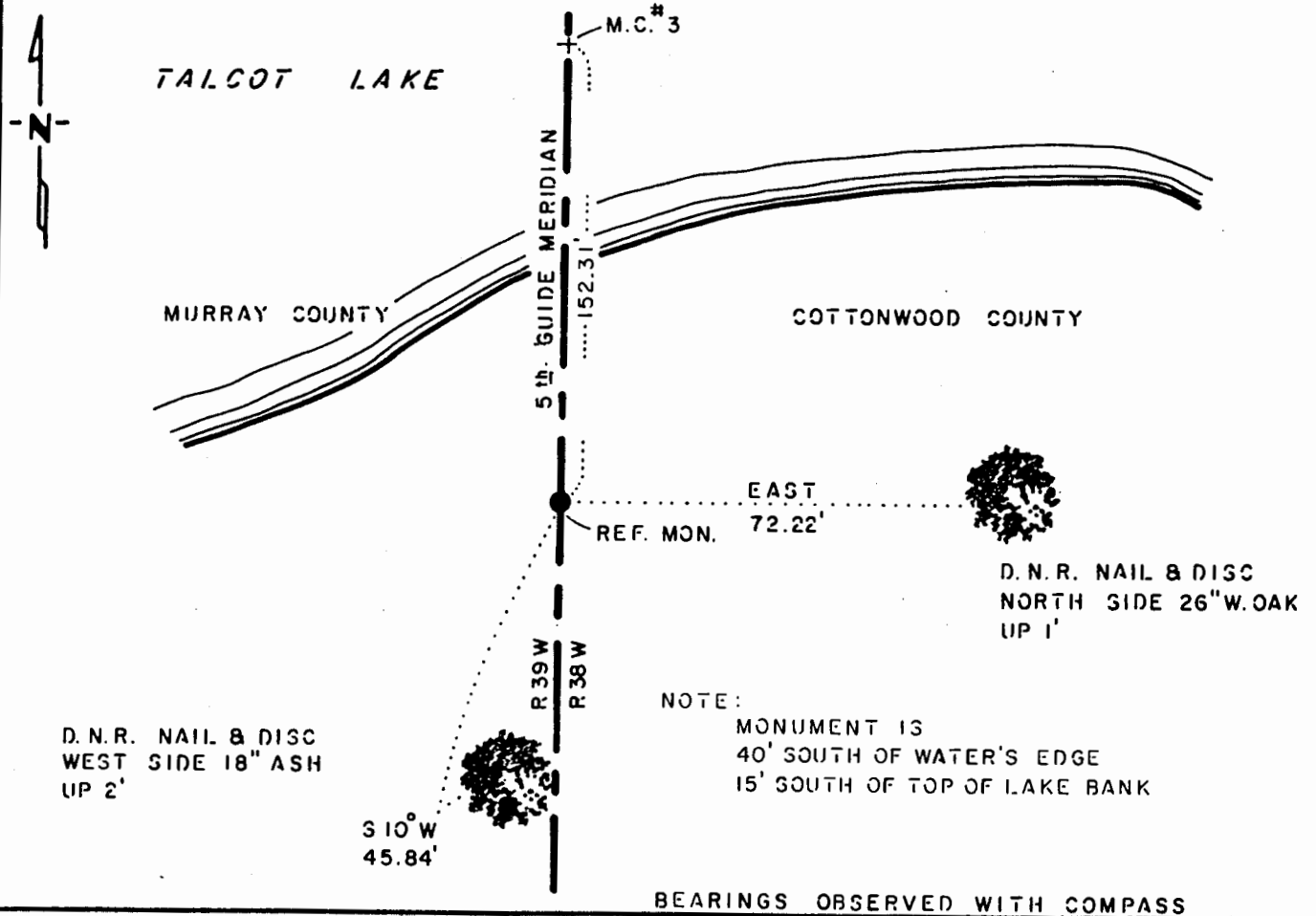
# 3 MEANDER Corner of Section 24, Township 105 N., Range 39 W., 5<sup>th</sup> P.M.

STATE OF MINNESOTA, County of MURRAY

At the corner location shown on the sketch:

- On \_\_\_\_\_ found a \_\_\_\_\_  
DATE
- left monument as found,  lowered monument,  removed monument (explain)
- On 6-25-85 placed a 1 1/4" x 1 1/4" x 20" PERFORATED STEEL TUBE WITH  
DATE  
ALUMINUM CAP STAMPED "D.N.R. SURVEY MARKER", UP 0.3', AS REF. MON.

### SKETCH OF REFERENCE TIES



NOTE:  
 MONUMENT IS  
 40' SOUTH OF WATER'S EDGE  
 15' SOUTH OF TOP OF LAKE BANK

BEARINGS OBSERVED WITH COMPASS

Statement of evidence relative to this corner location is on back of page.

J. B. M. 7-15-85  
6-158

I hereby certify that this document and the data contained herein was prepared by me or under my direct supervision.

Bruce W. Sheppard 12/20/85  
SURVEYOR DATE

Registration No. 17003

- Land Surveyor,  Professional Engineer
- County Surveyor,  County Engineer

### OFFICE OF THE COUNTY RECORDER

County of \_\_\_\_\_

I hereby certify that this document was filed in the Co. Recorders office at \_\_\_\_\_ .M. on the \_\_\_\_\_ day of \_\_\_\_\_ A.D., 19 \_\_\_\_\_

County Recorder \_\_\_\_\_

By \_\_\_\_\_, Deputy

DOCUMENT NO. \_\_\_\_\_

Meander Corner #3 of Section 24, Township 105 North, Range 39 West

This corner was originally established by the U. S. General Land Office survey in 1857. The government notes show corner marked with a wood post with the following bearing trees marked:

10" Willow, South 18° West, 85 links (56.10 feet)

8" Willow, South 70° East, 66 links (43.56 feet)

The notes also show corner 18.60 chains (1227.60 feet) North of the northeast corner of Section 25.

The government meander notes of lake in Section 19 and 30 of Township 105 North, Range 38 West show:

Could not find any of the meander corner posts noted on plats of township lines - they were either covered with water or washed out of places.

In April 1983, the DNR Bureau of Engineering contacted the following for corner information:

Cottonwood County Offices of the Recorder and Highway Engineer  
Murray County Offices of the Recorder and Highway Engineer  
Sioux Engineering of Windom  
Martin Land Surveying of Worthington

The following information was obtained from the Cottonwood County Recorder's Office:

Plat 49 contains a resurvey of Township 105 North, Range 38 West done by C. W. Gove, County Surveyor, in 1898. Plat shows that corner was established 1227.5 feet north of the northeast corner of Section 25. A 2½" by 1½" by 30" cast iron stake was set to mark this location.

The following information was obtained from the Office of Sioux Engineering:

A copy of a resurvey plat of Township 105 North, Range 38 West, obtained from Howard Boeck of Westbrook, and done by C. W. Gove, County Surveyor, in 1898, shows corner but does not indicate what was found or set. Corner is shown 1227.9 feet north of the northeast corner of Section 25.

The following information was obtained from the Cottonwood County Recorder's Office:

A resurvey plat of Township 105 North, Range 38 West, done by C. W. Gove, County Surveyor, in 1898, shows corner but does not indicate what was found or set. Corner is shown 1227.5 feet north of the northeast corner of Section 25.

The following information was obtained from the DNR Bureau of Engineering's Office:

A 1935 survey shows a 1½" by 36" cast iron stake at corner, but does not indicate if found or set. Corner is shown 118 feet north of a 1" by 18" long iron stake.

In May 1983, the DNR Bureau of Engineering traversed to the area of the corner and found its location to be in Talcot Lake. Searched for but found no evidence of the GLO bearing trees. Then the lost position for corner was computed using the northeast corner of Section 36 and the east quarter corner of Section 24.

Accept the lost position as the location of the corner.

Traverse information is available from the DNR Bureau of Engineering.